



Multiple Application Platform Server

## MAPS 5.2 Release Guide

*Product version 5.2*

*Last updated 11/9/2016*

# Trademark, Publishing Statement, and Copyright Notice

---

© 1998-2016 Evisions, Inc. All rights reserved.

This software and related documentation are provided under a license agreement containing restrictions on use and disclosure and are protected by intellectual property laws. No part of this document may be reproduced, stored in or introduced into a retrieval system, or transmitted in any form or by any means (electronic, mechanical, photocopying, recording, or otherwise), or for any purpose, without the express written permission of Evisions, Inc.

The information contained herein is subject to change without notice and is not warranted to be error-free. Product features referenced herein for a period of time may not match product contents. Evisions, Inc. does not warrant that the functions contained in the software will meet your requirements or that the operation of the software will be uninterrupted or error free. Evisions, Inc. reserves the right to make changes and/or improvements in the software without notice at any time.

This software and documentation may provide access to or information on content, products, and services from third parties. Evisions, Inc. and its affiliates are not responsible for and expressly disclaim all warranties of any kind with respect to third-party content, products, and services. Evisions, Inc. and its affiliates will not be responsible for any loss, costs, or damages incurred due to your access to or use of third-party content, products, or services. Evisions, Inc. does not endorse the content or developer of any products or web sites mentioned.

All information in this guide is designed for instructional purposes only. Evisions, Inc. makes no guarantees regarding the accuracy or performance of any techniques used in this guide. Software configurations and environments may vary, and some techniques used in this guide may not operate efficiently under all configurations. This guide may contain examples of various technologies or products, which are the sole property and responsibility of their creators.

Trademarks are the property of the respective owners for any products mentioned herein.

# Table of Contents

---

<b>Table of Contents</b> .....	<b>3</b>
<b>What's New in MAPS 5.2?</b> .....	<b>4</b>
MAPS Updates .....	4
Product versions .....	4
Installation .....	4
1. Prepare test environment and ensure current backup .....	4
2. Check for updates .....	4
3. Allow update process to complete .....	5
4. Verify the latest version is installed .....	5
<b>MAPS Administrators</b> .....	<b>6</b>
Public/Private Key Authentication for SFTP .....	6
FTP Servers - Keys Screen .....	7
Key Format .....	7
XML File Format for Importing and Exporting Users .....	8
<b>MAPS 5.2 Release Notes</b> .....	<b>9</b>
Enhancements .....	9
Resolved Issues .....	9
<b>Getting Help</b> .....	<b>11</b>

# What's New in MAPS 5.2?

---

Evisions is pleased to announce the release of MAPS version 5.2, which includes the following changes:

- Added support for public/private key authentication for SFTP file transfers.
- You can now include user role and group information when importing and exporting users, using a newly-added XML file format.
- Additional enhancements and resolved issues.

We appreciate the feedback received from all of our users. Our products would not be what they are today without your continued support. If you have any comments or suggestions, please do not hesitate to [open a HelpDesk ticket](#) and let us know.

## MAPS Updates

---

MAPS 5.2 is an update to the MAPS service (which includes the eLauncher) and the MAPS Configuration tool. You should upgrade both components concurrently.

### [Product versions](#)

The latest versions of MAPS included in this release are:

- MAPS service 5.2.0.1375 / MAPS configuration 5.2.0.664 / eLauncher 5.2.0.4

## Installation

---

### [1. Prepare test environment and ensure current backup](#)

We highly recommend installing updates in a test environment before applying them to your production environment. You should make sure that a current backup is available in case of any unforeseen issues. To create a full backup of your MAPS environment, go to the **Server** ->

**Backups** screen in MAPS and click **Backup Now**.

### [2. Check for updates](#)

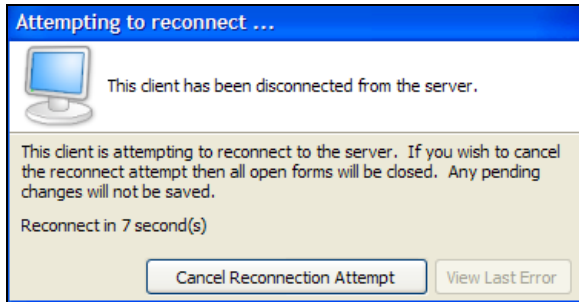
Click the **Check for Updates** button in the MAPS Configuration tool to view available updates.

If you are not already running MAPS 4.x, please refer to the [MAPS 4.0 Upgrade Guide](#) for instructions prior to proceeding with this upgrade.

It is possible to apply updates when users are on the system; however, to avoid the possibility of losing unsaved work we recommend applying updates during off hours.

### 3. Allow update process to complete

When applying updates to the MAPS service you will be temporarily disconnected from the server:



The update process may take a few minutes to complete. **Do NOT cancel the reconnection attempt or manually restart the server.** You will automatically be reconnected to the server once the update has been applied.

### 4. Verify the latest version is installed

To ensure that you are on the most current version, continue clicking the **Check for Updates** button and applying the updates until no new updates are available.

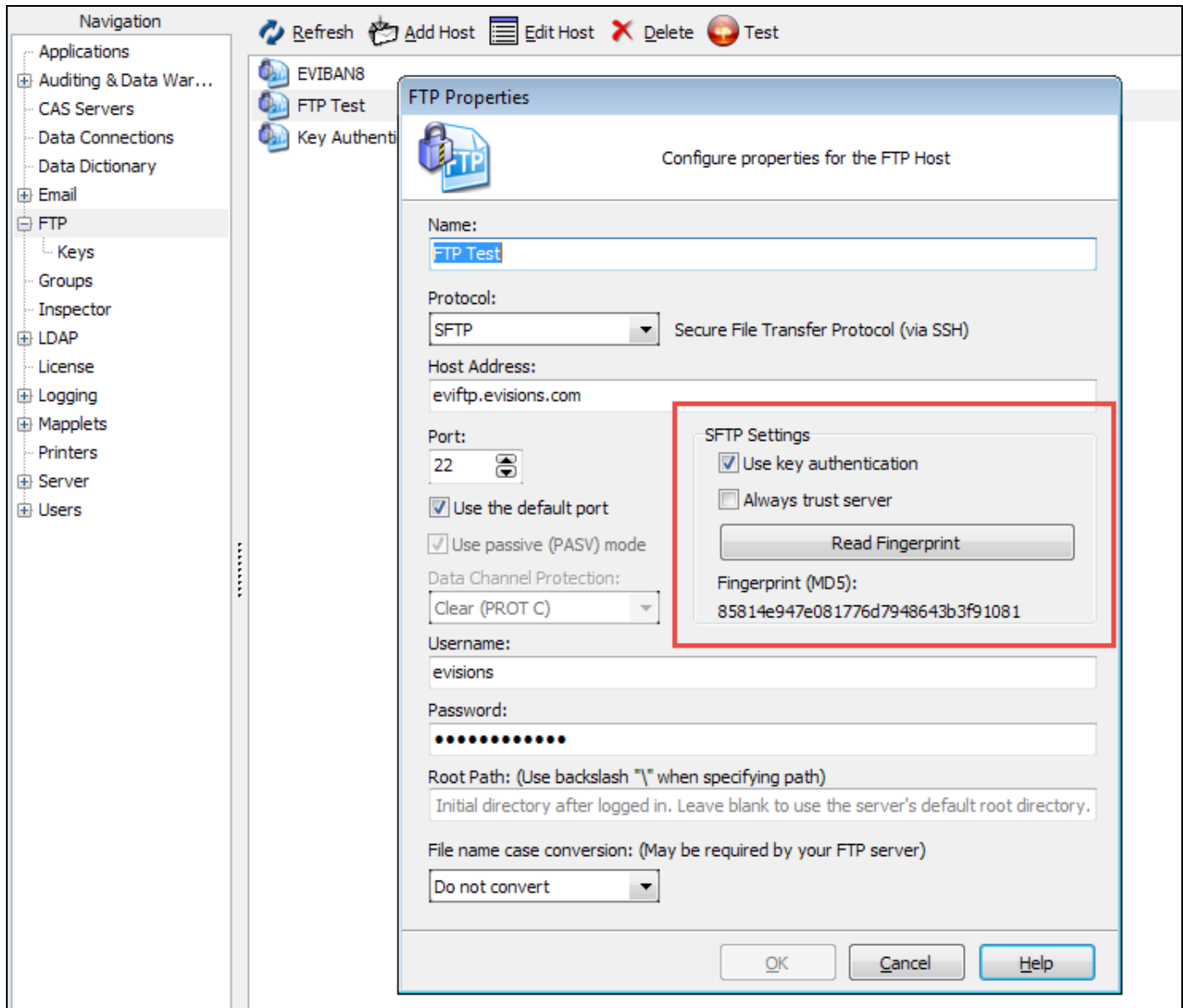
### Please Provide Us with Your Feedback!

As always, we welcome any [feedback or suggestions](#) you may have. We very much appreciate your thoughts and suggestions, so please keep the great ideas coming!

## Public/Private Key Authentication for SFTP

When configuring an SFTP server, you now have the option to use public/private key authentication instead of a username and password to connect to the server. This option requires that you have a private/public SSH key pair, and that the public key is in place on your SFTP server.

On the FTP Properties dialog, when the SFTP protocol is selected you will now see an **SFTP Settings** area. Check the box if you wish to **Use key authentication** for this SFTP server.



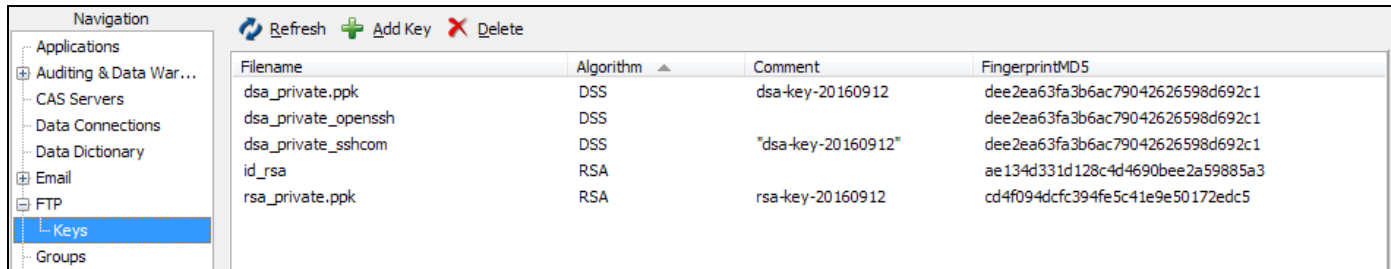
Click the **Read Fingerprint** button to request the public key fingerprint from the server. The fingerprint is a hash of the FTP server's public key, which MAPS stores in order to verify that it is connecting to the correct SFTP server.

The option to **Always trust server** prevents MAPS from verifying that the stored fingerprint matches the fingerprint from the server when using key authentication. You would usually only check this option when connecting to internal servers or testing environments where you are not concerned about man-in-the-middle attacks.

If key authentication is not enabled, you will need to specify a username and password in the section below the SFTP settings as you did previously.

## [FTP Servers - Keys Screen](#)

Underneath the FTP screen, there is now a **Keys** screen where you add the private SSH key(s) to MAPS. Keys installed here must correspond to the public key on your SFTP server. When connecting to an SFTP server, MAPS attempts to authenticate to the server using the first key in the list. If authentication fails, it goes down the list of keys until a match is found or until all keys have been tried.



The screenshot shows the 'Keys' screen in the MAPS interface. It features a navigation pane on the left with 'Keys' selected. The main area contains a table with columns for 'Filename', 'Algorithm', 'Comment', and 'FingerprintMD5'. Above the table are buttons for 'Refresh', 'Add Key', and 'Delete'.

Filename	Algorithm	Comment	FingerprintMD5
dsa_private.ppk	DSS	dsa-key-20160912	dee2ea63fa3b6ac79042626598d692c1
dsa_private_openssh	DSS		dee2ea63fa3b6ac79042626598d692c1
dsa_private_sshcom	DSS	"dsa-key-20160912"	dee2ea63fa3b6ac79042626598d692c1
id_rsa	RSA		ae134d331d128c4d4690bee2a59885a3
rsa_private.ppk	RSA	rsa-key-20160912	cd4f094dcfc394fe5c41e9e50172edc5

Click **Add Key** to browse for a key file to import. The key and its details will then be added to the list on the Keys screen.

- **Filename** - The name of the key file of the private key.
- **Algorithm** - Specifies the encryption algorithm used for the key. MAPS supports DSA and RSA encryption.
- **Comment** - The "Comment" field from within the key file.
- **Fingerprint (MD5)** - The fingerprint (hash) of the key.

## [Key Format](#)

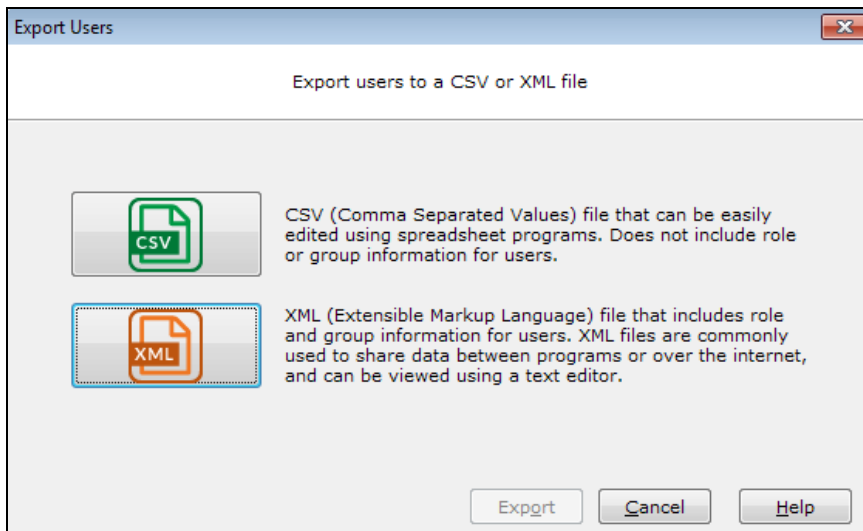
MAPS supports SSH keys generated using the DSA or RSA encryption algorithms.

You can generate the SSH key pair using a program of your choice. [PuTTYgen](#) is a free, open-source utility (not supplied by Evisions) that can be used for this purpose. Please refer to their documentation for installation and usage instructions.

You should store the private key in a secure location, making sure it is not distributed to any other party. Messages encoded using your public key can only be decrypted using your private key. For more information on public-key cryptography, refer to [http://en.wikipedia.org/wiki/Public-key\\_cryptography](http://en.wikipedia.org/wiki/Public-key_cryptography).

## XML File Format for Importing and Exporting Users

In addition to importing and exporting users from/to CSV files, MAPS now allows you to use an XML file format. The XML file includes support for two additional fields, Role and Group. This allows you to specify exactly which role(s) and group(s) are given to each user, instead of needing to have a separate import file for every role/group combination or configuring roles and groups manually.



The XML format for a user is as follows:

```
<?xml version="1.0" encoding="UTF-8" ?>
<MAPS-Config>
  <User>
    <Name>MyUsername</Name> <Description>The description of this user</Description>
    <GUID>F468C7C8-C39F-4746-95F9-953E06B94BC1</GUID>
    <EmailAddress>myusername@evisions.com</EmailAddress>
    <Priority>Normal</Priority>
    <Disabled>No</Disabled>
    <CreatedBy>evisions</CreatedBy>
    <CreatedDate>2016-09-26T13:44:44.125-07:00</CreatedDate>
    <ModifiedBy>evisions</ModifiedBy>
    <ModifiedDate>2016-10-05T12:37:25.378-07:00</ModifiedDate>
    <LastLogonDate>2016-09-26T13:46:23.346-07:00</LastLogonDate>
    <CAS-Id>MyCasID</CAS-Id>
    <Notes>This is a note about this user</Notes>
    <StartDate/>
    <StopDate/>
    <DeleteOnStop>No</DeleteOnStop>
    <Source>MAPS</Source>
    <Password/>
    <MustChange>No</MustChange>
    <NeverExpire>Yes</NeverExpire>
    <Role Product="ProductName" Name="RoleName1"/> <Role Product="ProductName" Name="RoleName2"/>
    <Group Name="Group1"/>
    <Group Name="Group2"/>
  </User>
</MAPS-Config>
```

Notice how this user has more than one of the `<Role>` and `<Group>` tags. For each role or group the user has, there will be a corresponding entry in the XML file.

You can generate a sample XML file by exporting users from your MAPS environment, or by downloading a generic [sample file](#).



# MAPS 5.2 Release Notes

MAPS Service 5.2.0.1375 / MAPS Configuration Tool 5.2.0.664 / eLauncher 5.2.0.4

## Enhancements

Area	Description	Issue number
CAS	CAS IDs are now required to be unique for each user. When importing users into MAPS, any duplicate CAS IDs will result in an error message for those records. When copying an individual user, the CAS ID field is blanked out and you will be prompted to enter a new CAS ID (if desired) for the new user.	MAPS-1277
CAS	MAPS now removes any blank spaces entered before or after a user's CAS identifier.	MAPS-1282
CAS	Added support for connecting to CAS servers using TLS versions 1.1 and 1.2. Previously, only version 1.0 was supported.	MAPS-1267
eLauncher	Increased the resolution of the product logos in the eLauncher.	MAPS-1214
FTP	Added support for using public/private key authentication when transmitting files via SFTP.	MAPS-1298
FTP	Added an option to the FTP Properties dialog that controls whether or not MAPS will verify the public key for an SFTP server when using key authentication. This resolves an issue where MAPS was not prompting to accept the key when connecting to a server for the first time or when the key changed.	MAPS-556
Users	On the Users screen, the Delete button is now disabled when the system Administrator user is selected.	MAPS-1254
Users	When importing or exporting users from/to a file, MAPS now supports an XML format that allows you to include specific role and group information for each user.	MAPS-1158

## Resolved Issues

Area	Description	Issue number
Connections	When adding queuing rules to a data connection, if you did not specify which days the rule should be active then the rule would not save after clicking OK. To resolve this, the OK button is now disabled until you choose the day(s) that you wish the rule to be in effect.	MAPS-1230
Connections	Removed repetitive warning messages that appeared when an ADO connection string contained duplicate properties.	MAPS-1231
Connections	When using the native SQL Server database driver, the functions of the !> (not greater than) and !< (not less than) operators were reversed.	MAPS-1226
Connections	When using the native Oracle database driver, the Service Name property was not picking up the list of configured Oracle databases from the tnsnames.ora file.	MAPS-1229
Connections	When modifying an existing queuing rule for a data connection, you were able to set the Max SQL value higher than the maximum of 1024.	MAPS-1269

Area	Description	Issue number
Connections	When using the native Oracle database driver, Unicode characters were being converted to their ANSI equivalents when executing queries. This resulted in the query returning data with missing characters, such as those required for Latin, French, Arabic, Chinese, etc.	MAPS-1240
Connections	When using the native SQL Server database driver, using certain reserved characters ('!', '&', ':', '?', '{', and '}') in a query would cause the SQL to be interpreted incorrectly.	MAPS-1308
Connections	When entering the password for a native database connection on the Driver Properties screen, the password characters were not being obscured on the screen.	MAPS-1257
eLauncher	The product logos were not being centered when bypassing the eLauncher to link directly to an individual product's launch page.	MAPS-1191
Groups	Pressing Ctrl-Alt-Delete to lock the computer from the Groups screen while focus was on a group would delete the group without prompting. Pressing Ctrl-Alt-Delete no longer triggers a delete operation, and you are always prompted to confirm when deleting a group.	MAPS-1180
LDAP	When adding an LDAP group to MAPS, the description field was not being populated.	MAPS-1222
Security	When updating a license with a new institution key (for purposes of updating the name of the institution in MAPS after a name change), users were unable to log in to the MAPS applications unless their passwords were changed in MAPS immediately after applying the new license.	MAPS-1235
Stability	Under certain conditions involving simultaneous database queries run by multiple users, MAPS would produce an access violation or a "timeout waiting for write lock" error message.	MAPS-1300
Stability	Clicking the Undo button after making edits to the list of enabled SSL versions on the Server -> HTTP File Server -> Advanced Settings screen resulted in the error "An exception has occurred: SslVersionLB".	MAPS-1181
Users	When importing LDAP users from a CSV file, the email address was not being imported as it should have been when LDAPAddressOverride was set to 'Yes'.	MAPS-1239
Users	When importing or exporting users, MAPS would insert double quotes around filenames that contained spaces, preventing the file from being imported/exported.	MAPS-1218
User interface	When changing servers on the login dialog, it was possible to select no server by clicking in the white space area. The current server will now be retained unless a different server is selected.	MAPS-1245
User interface	When adding a queuing rule to a data connection, the slider for the maximum number of concurrent queries would appear offset to the right on systems with multiple monitors when the dialog appeared on a non-primary monitor.	MAPS-1227
User interface	When changing the maximum number of concurrent queries for an existing data connection queuing rule, if you enter a negative number it will now be automatically set to 0.	MAPS-1228
User interface	On the Auditing Configuration screen, the number of audit archive files to keep can no longer be set to negative numbers.	MAPS-1233

# Getting Help

---

For information on using the software, please refer to the in-product Help, which contains detailed information on all aspects of the product.

If you are having problems with the installation or configuration, you can search our knowledge base of common issues and their resolutions at <http://helpdesk.evisions.com>. If you are unable to find the solution, submit a HelpDesk request with a detailed explanation of the problem you are experiencing.

Please do not hesitate to contact the Evisions HelpDesk if any questions or problems arise. We are here to help you and want to ensure your success.

If you find that areas of this documentation could benefit from additional detail or clarification, please let us know. We are constantly trying to improve the installation process to make it as easy as possible.